



**COVALENT  
METROLOGY**

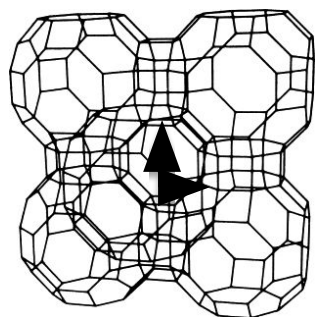
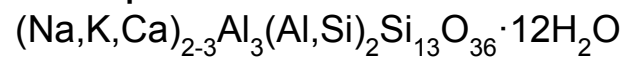
CM000015583 – Nanoshell  
SEM/EDS-COSEVA Advanced TRS

30 September, 2020

<b>Job Description</b>	<b>3</b>
<b>Summary</b>	<b>4</b>
<b>Sample Description</b>	<b>5</b>
<b>System Used</b>	<b>6</b>
<b>Results and Analysis</b>	<b>7 – 21</b>

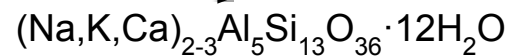
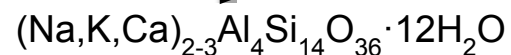
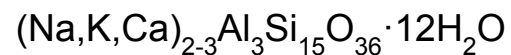
- Determine the elemental composition of particles in liquid suspension
  - Make special note of similarity or dissimilarity to zeolite, especially clinoptilolite
  - If clinoptilolite is found, the sample is to be compared to a reference

## Clinoptilolite:



Dimensions of void space  
0.7-0.9 nm

## Range of Possible Stoichiometries for Clinoptilolite:



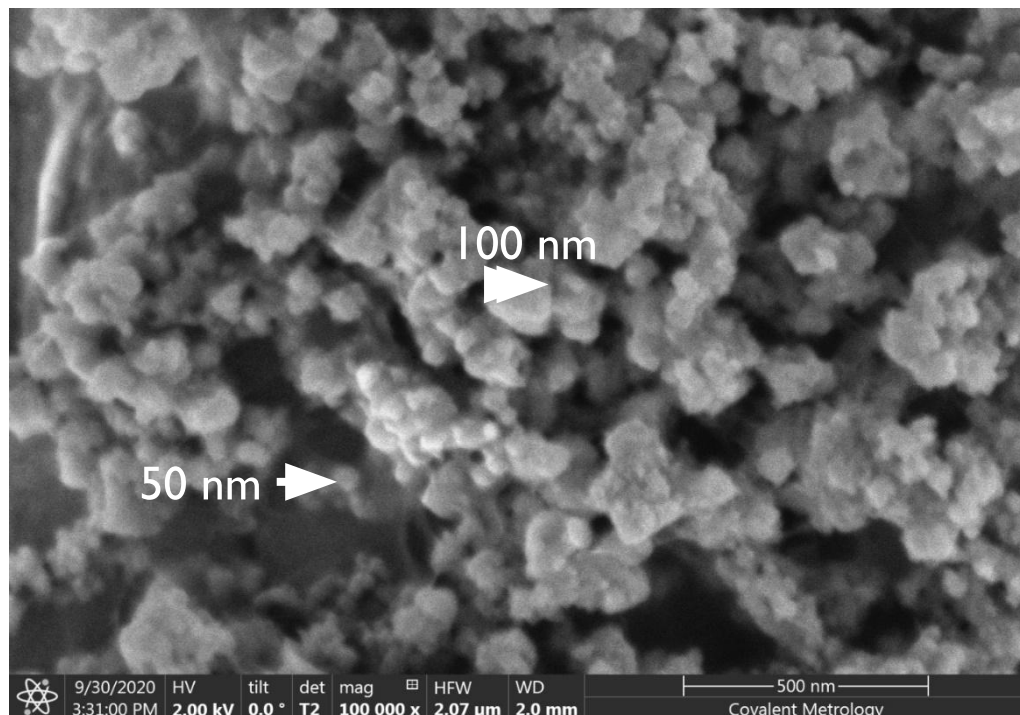
## Typical reference compositional % for Clinoptilolite:

\*Na, K, Ca, Al, and Si can (slightly) vary.

Element	Clinoptilolite
O	64
Na	2
Mg	0
Al	7
Si	25
S	0
K	2
Ca	2

- 3 sites are analyzed via EDS for composition with 5 kV incident beam
- After corrections, all display a reasonable match to clinoptilolite
- All particles show trace levels of Mg (used in processing buffer)
- Particles are clumped together due to drying on the Cu/C specimen plate.
- Particles range in size from 20 to 100 nm

**Note:** Corrections were applied post-measurement and therefore are not represented in the visualized spectra of this presentation.

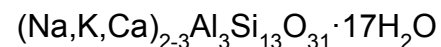


## Composition\*, Atomic %

Element	Part. 1	Part. 2	Part. 3	Average	Clinoptilolite
O	63	62	62	62	64
Na	3	2	3	3	2
Mg	1	1	1	1	0
Al	6	6	6	6	7
Si	26	27	27	26	25
S	0	0	0	0	0
K	0	0	0	1	2
Ca	1	1	1	2	2

\*Calculation includes background subtraction (Cu and C) and carbon subtraction (~22%)

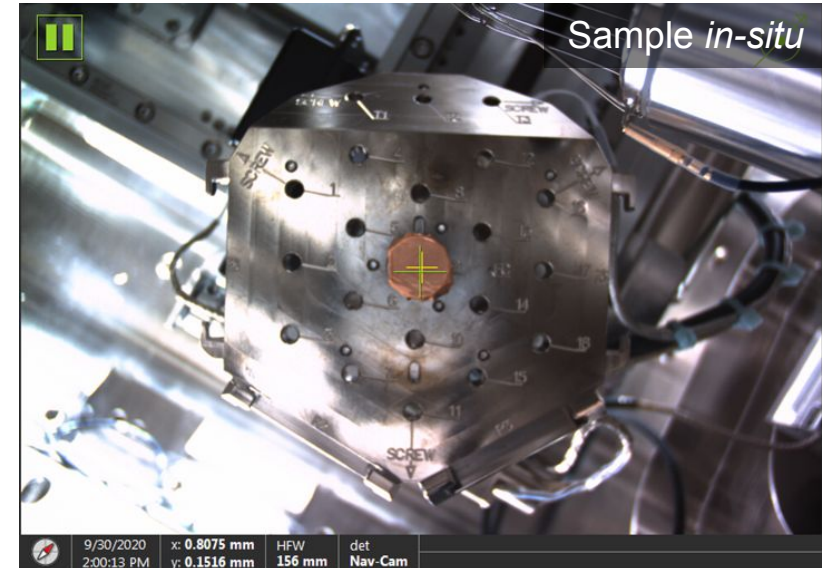
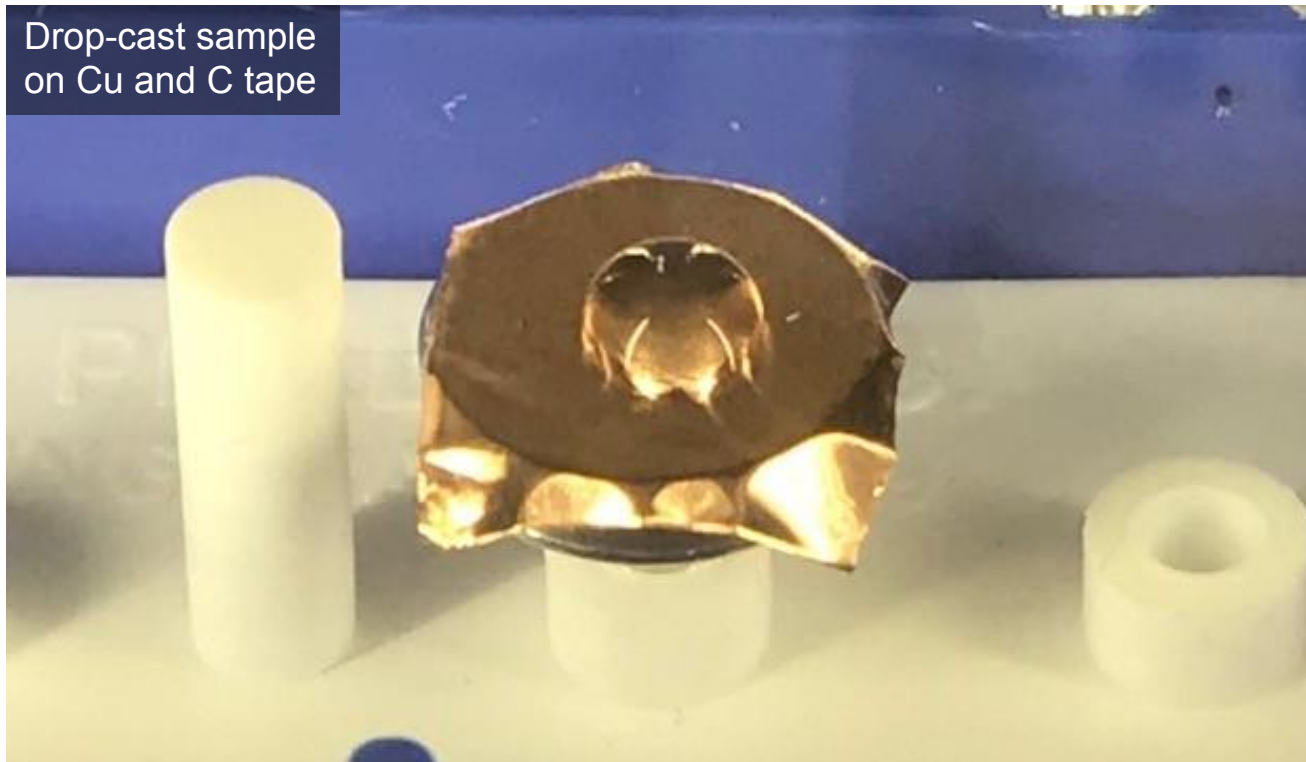
## Approximate Stoichiometry for Product:



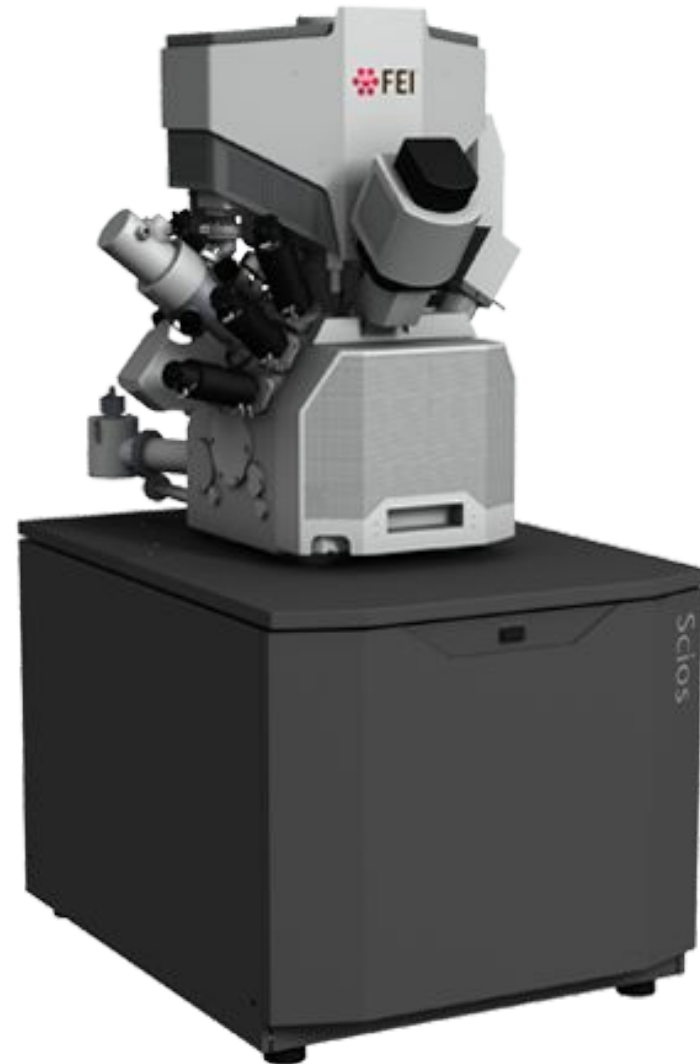
# Sample Description

6

- Liquid sample is drop-cast on Cu tape
  - Chosen for its dissimilarity to target Zeolite and Clinoptilolite
- Dried under vacuum at room temperature
- Sample is not coated prior to measurement



SEM images and EDS maps were obtained on a FEI Scios Dualbeam with an Oxford 150mm<sup>2</sup> detector.

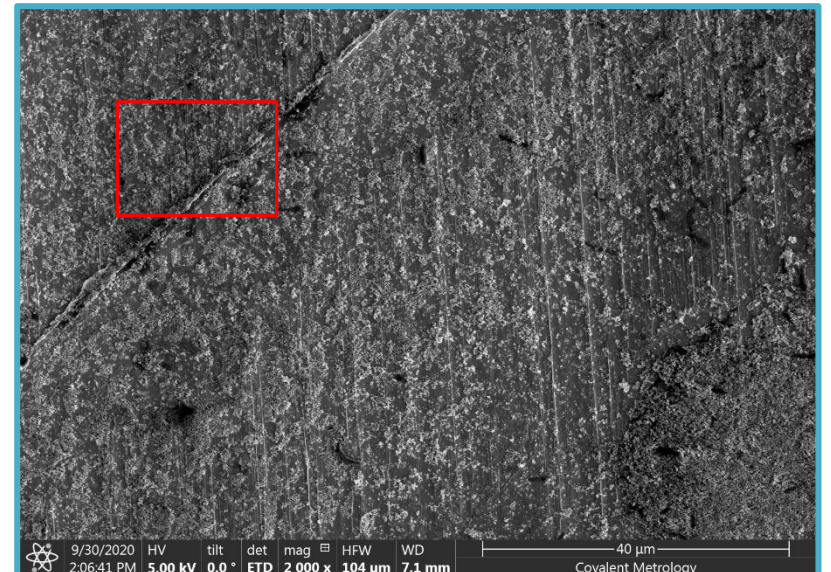
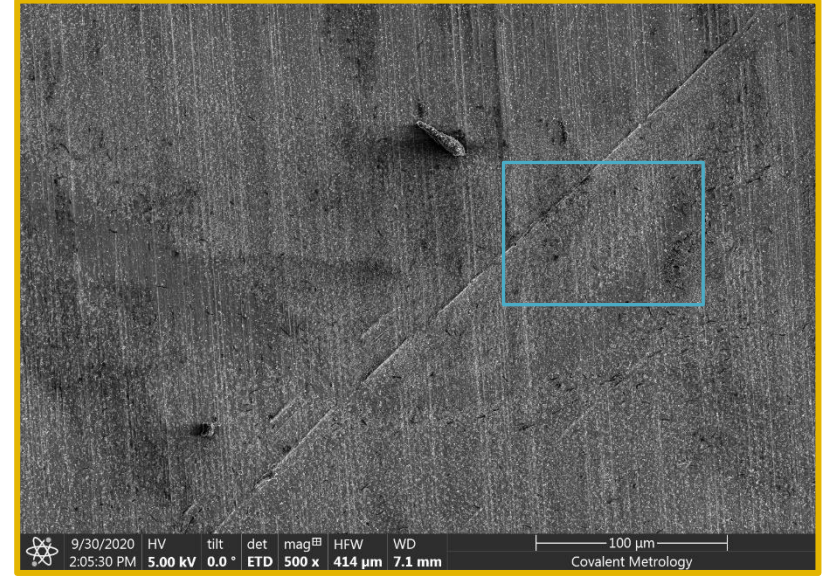


# Results and Analysis

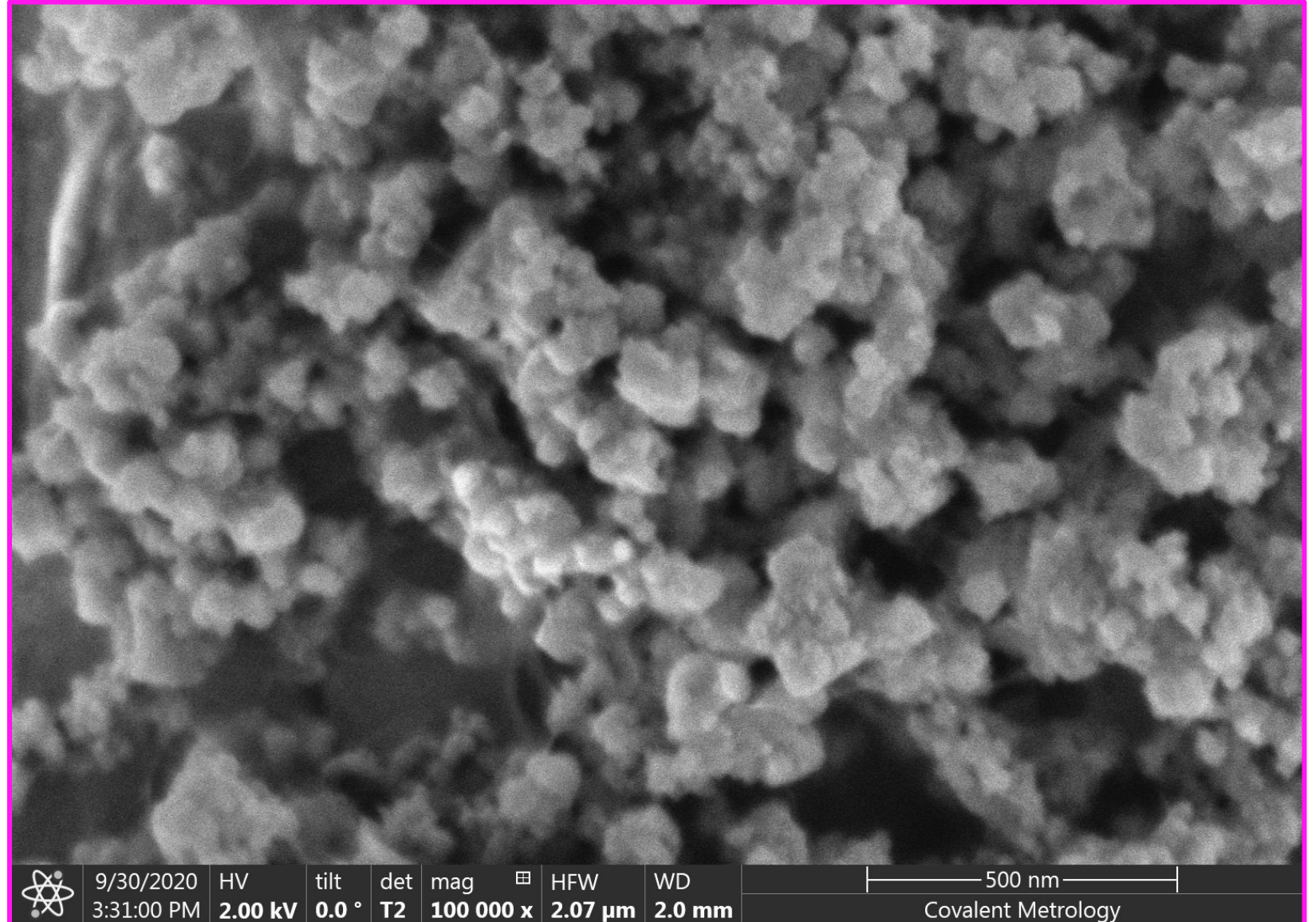
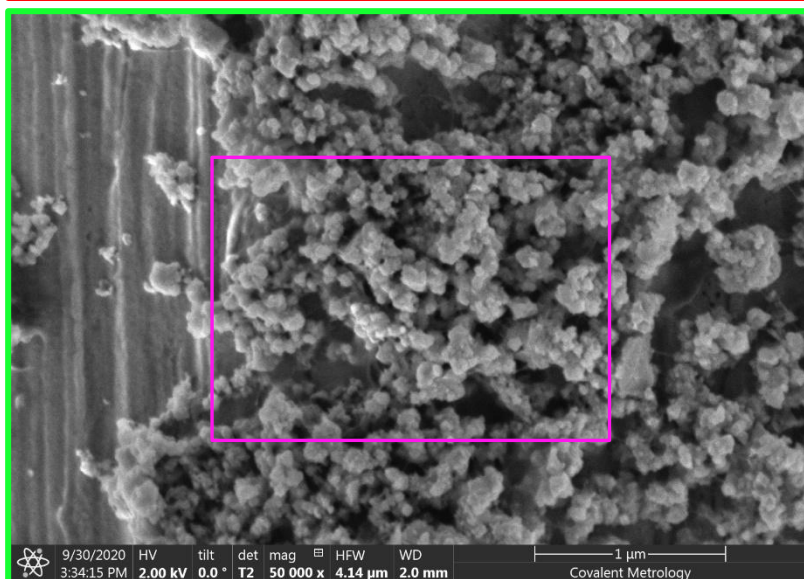




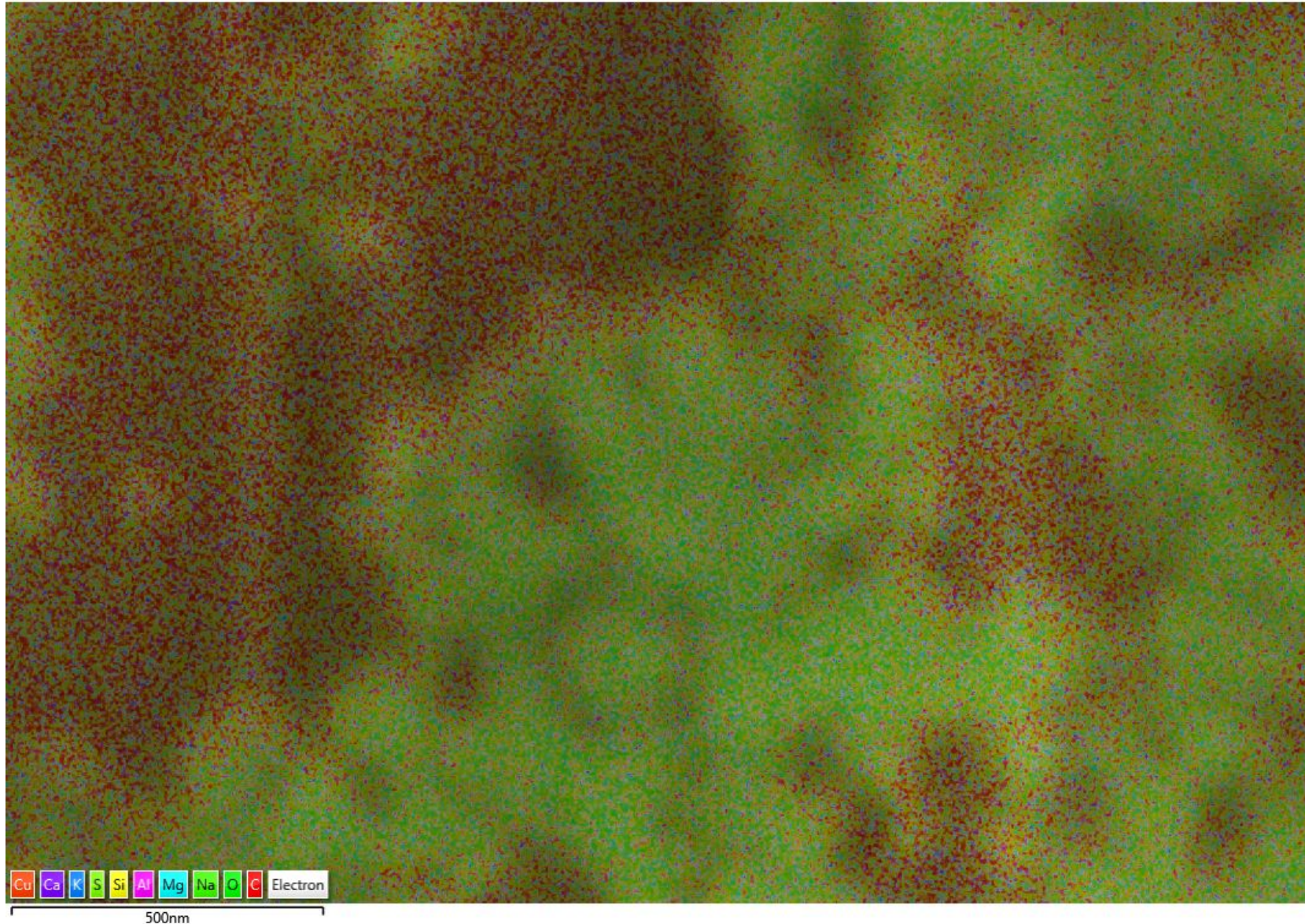
# SEM Images



# SEM Images



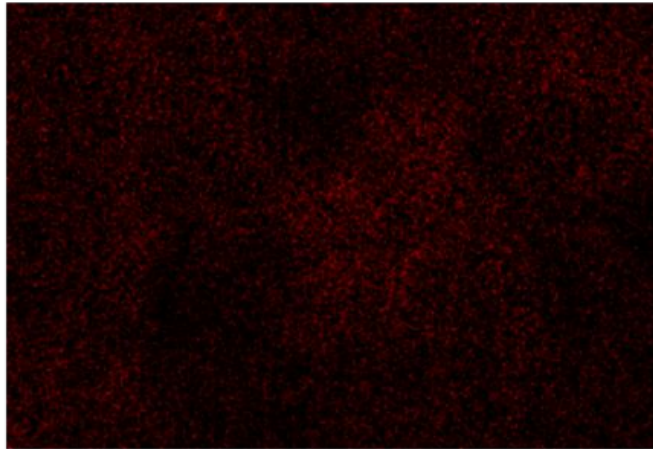
EDS Layered Image 7



# Site 1 – EDS Maps

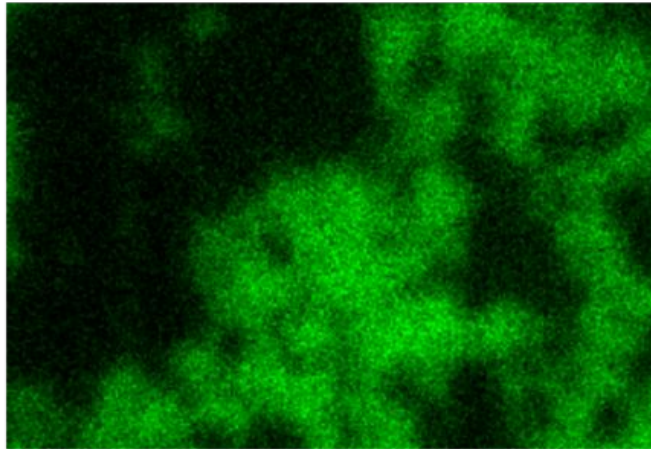
12

C K series



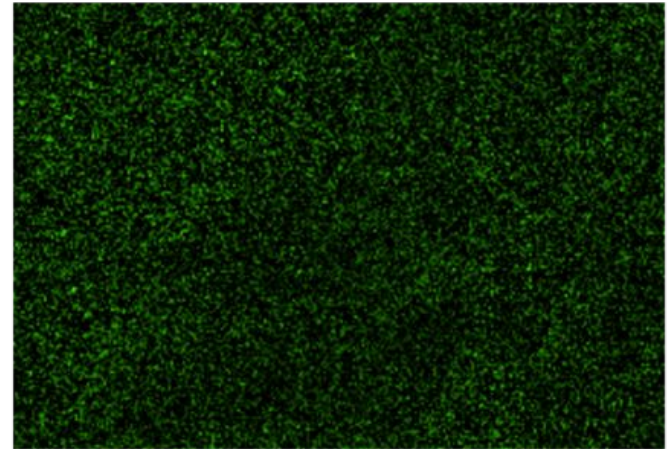
500nm

O K series



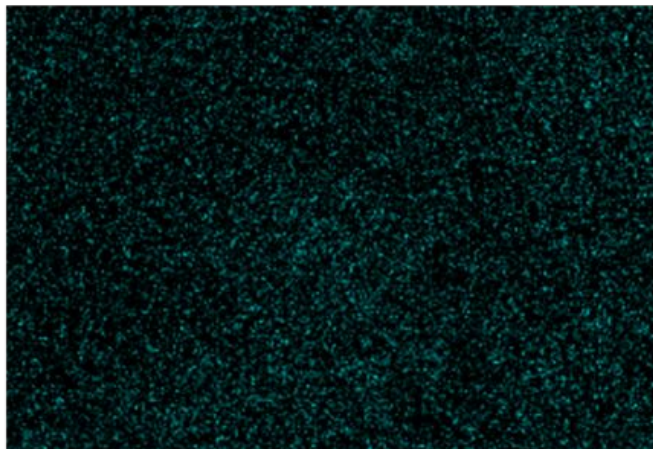
500nm

Na K series



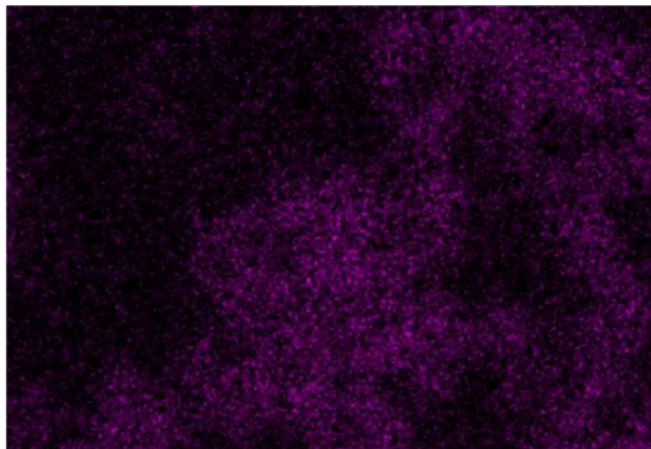
500nm

Mg K series



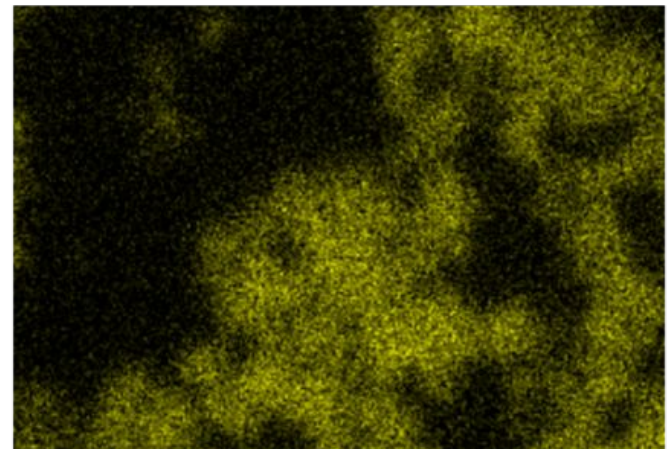
500nm

Al K series



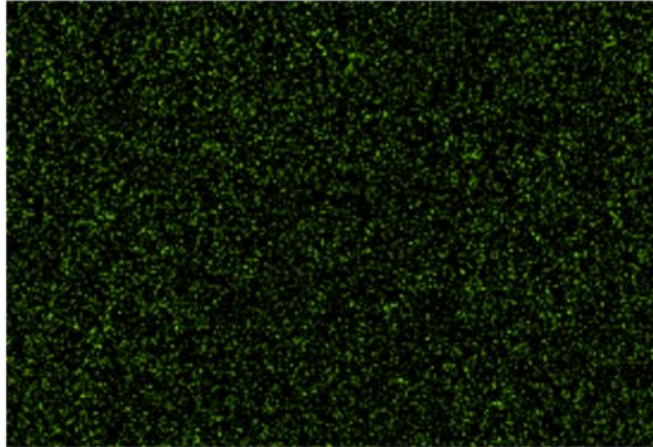
500nm

Si K series



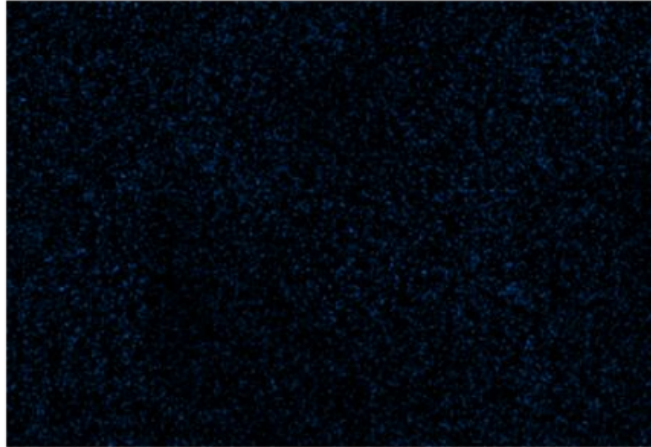
500nm

S K series



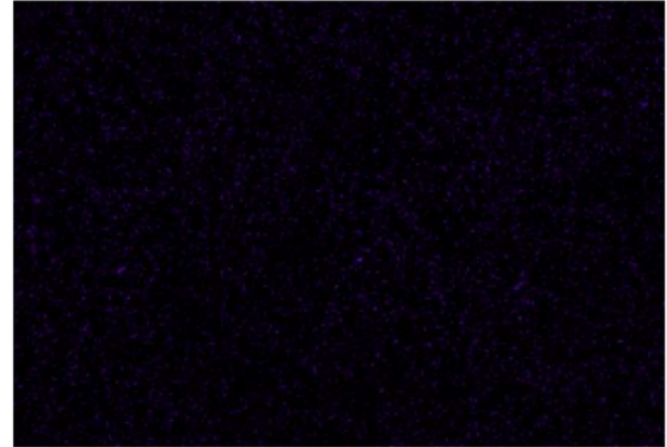
500nm

K L series



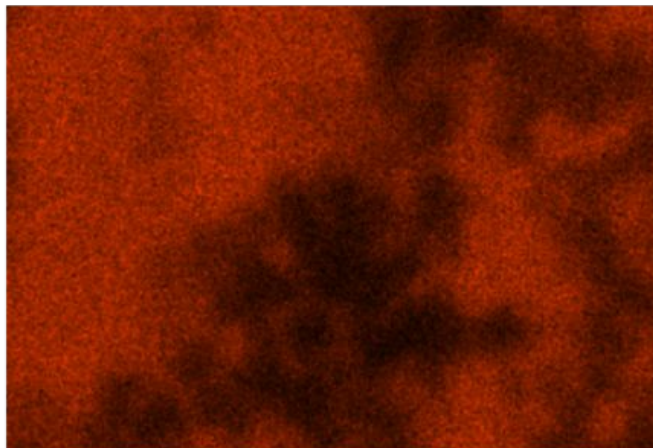
500nm

Ca L series



500nm

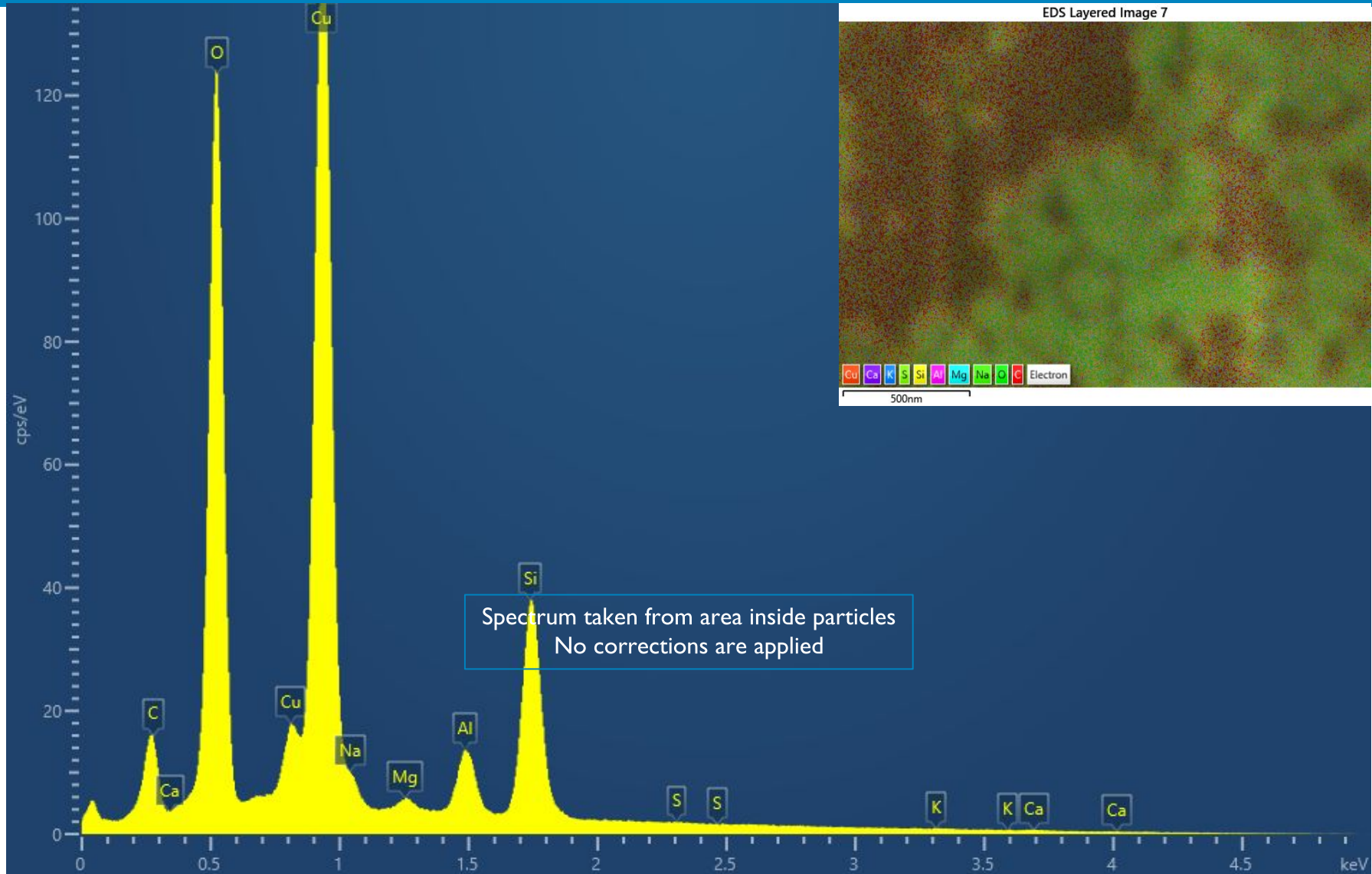
Cu L series



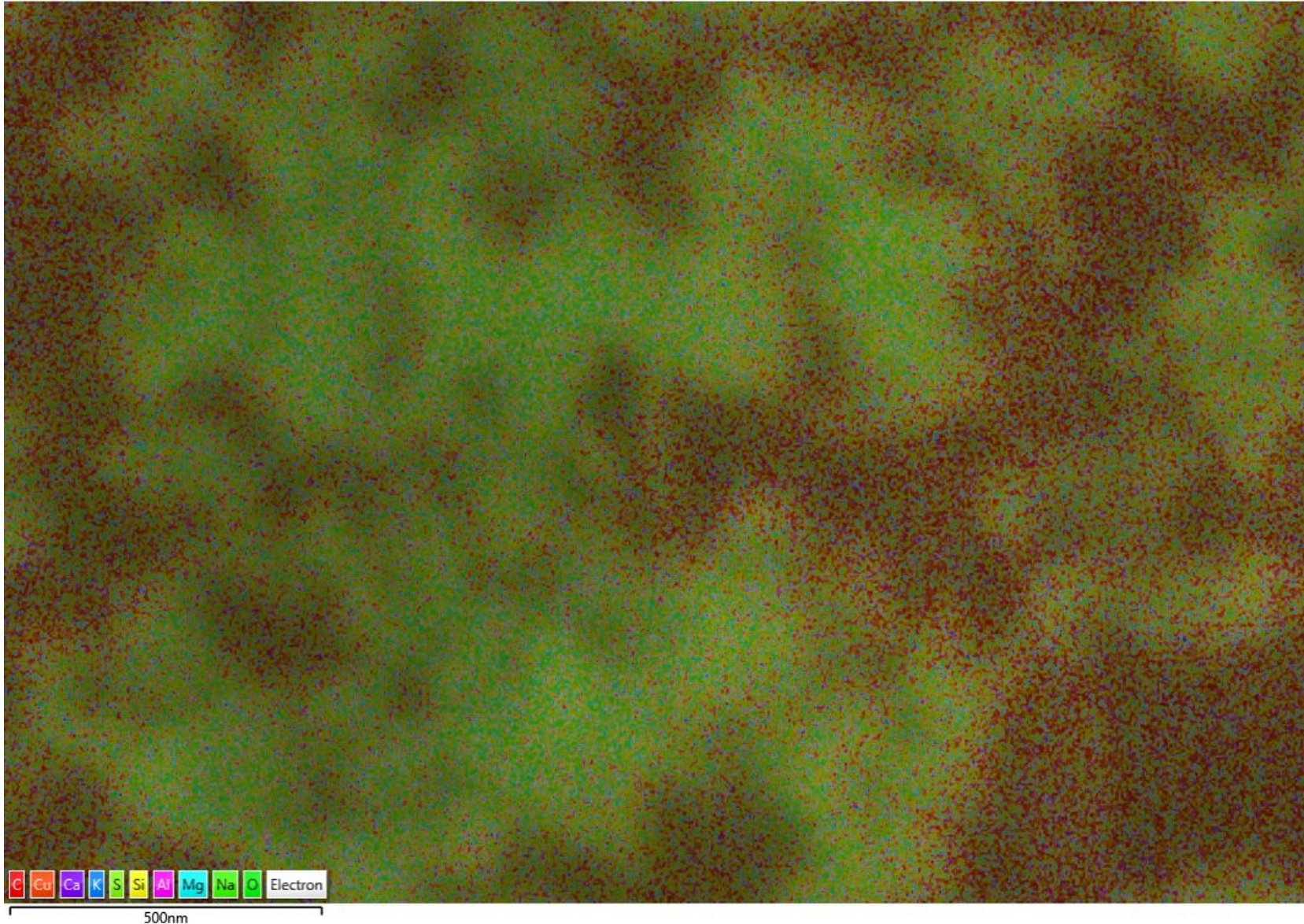
500nm

# Site 1 – Spectrum

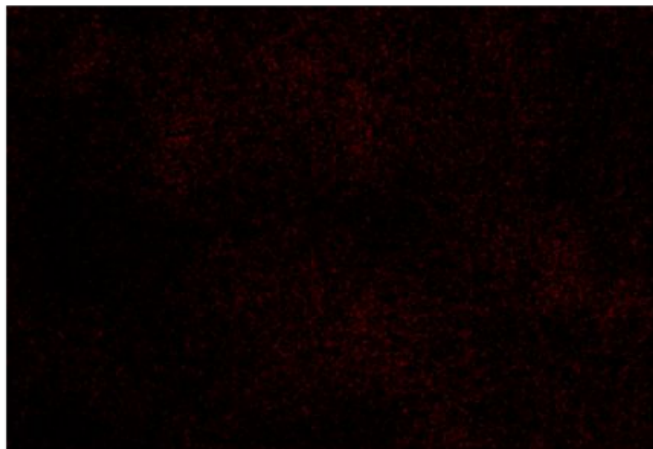
14



EDS Layered Image 8

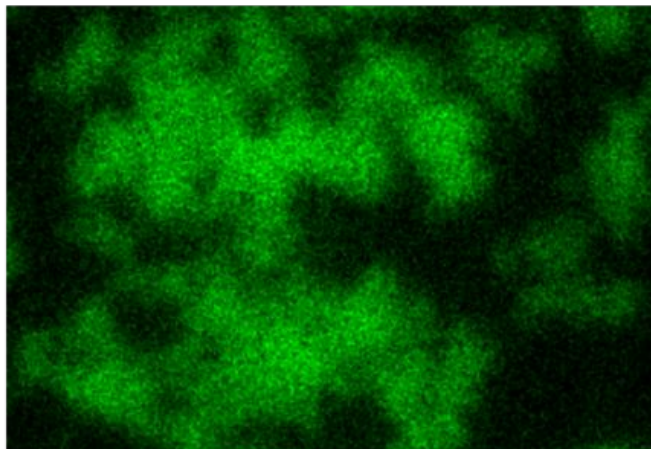


C K series



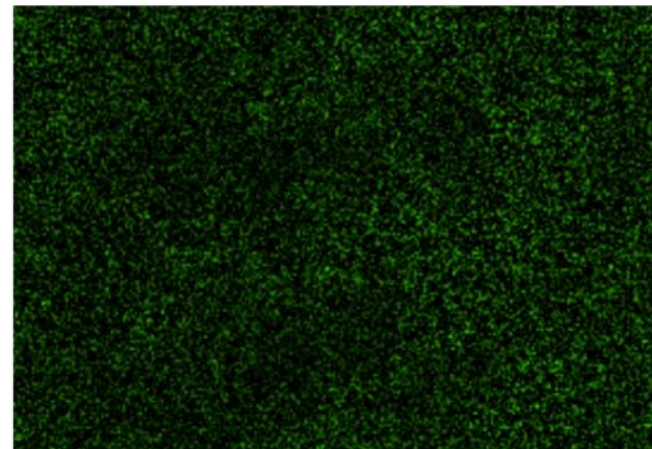
500nm

O K series



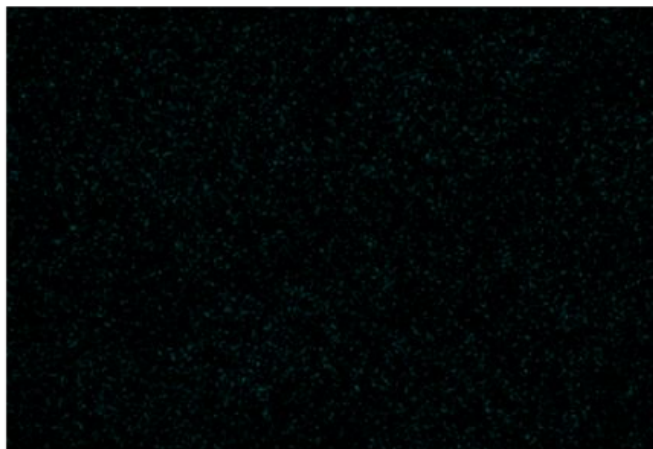
500nm

Na K series



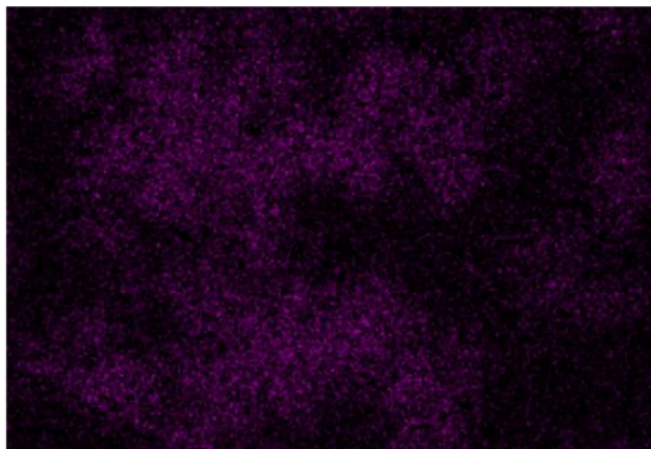
500nm

Mg K series



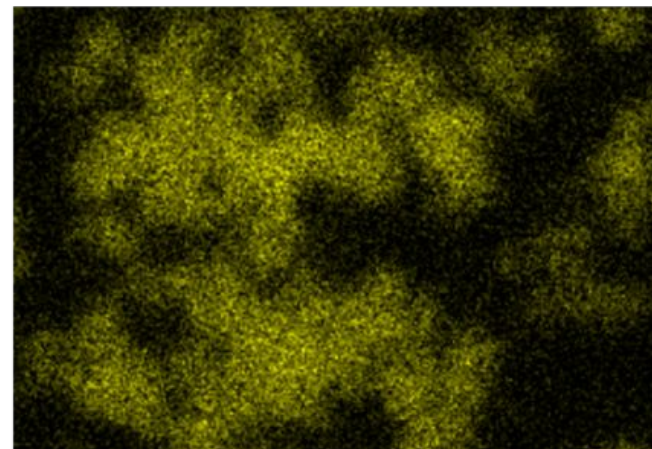
500nm

Al K series



500nm

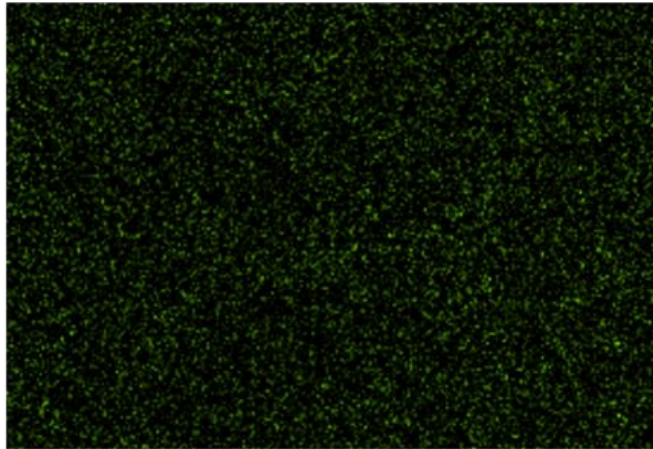
Si K series



500nm

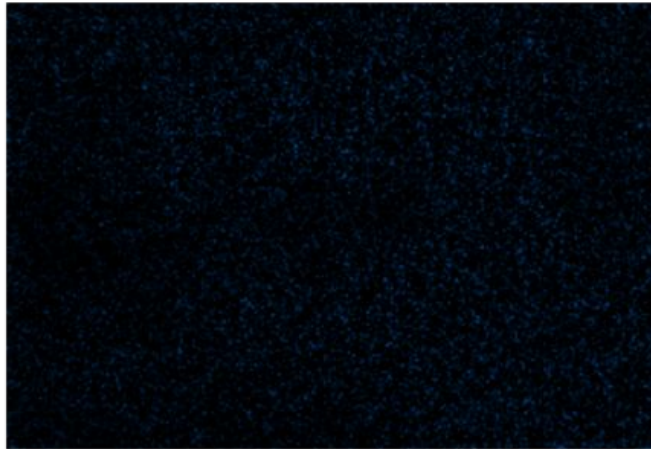


S K series



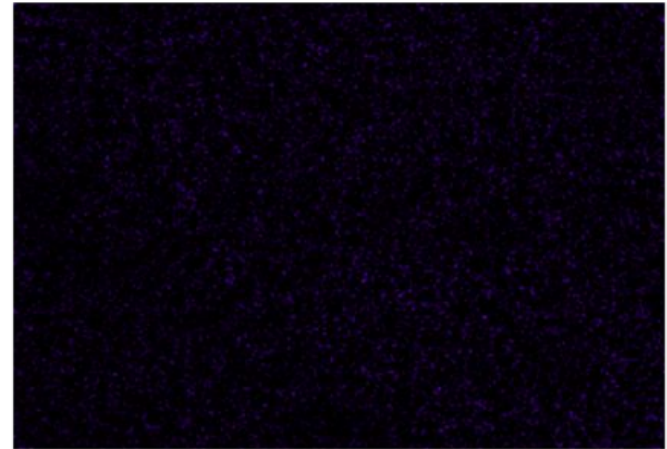
500nm

K L series



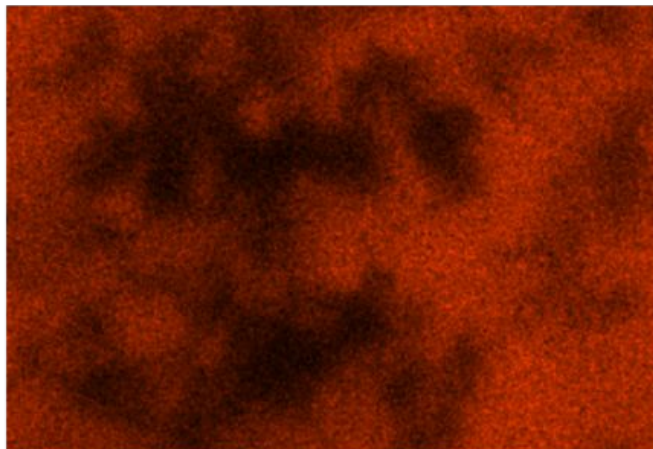
500nm

Ca L series

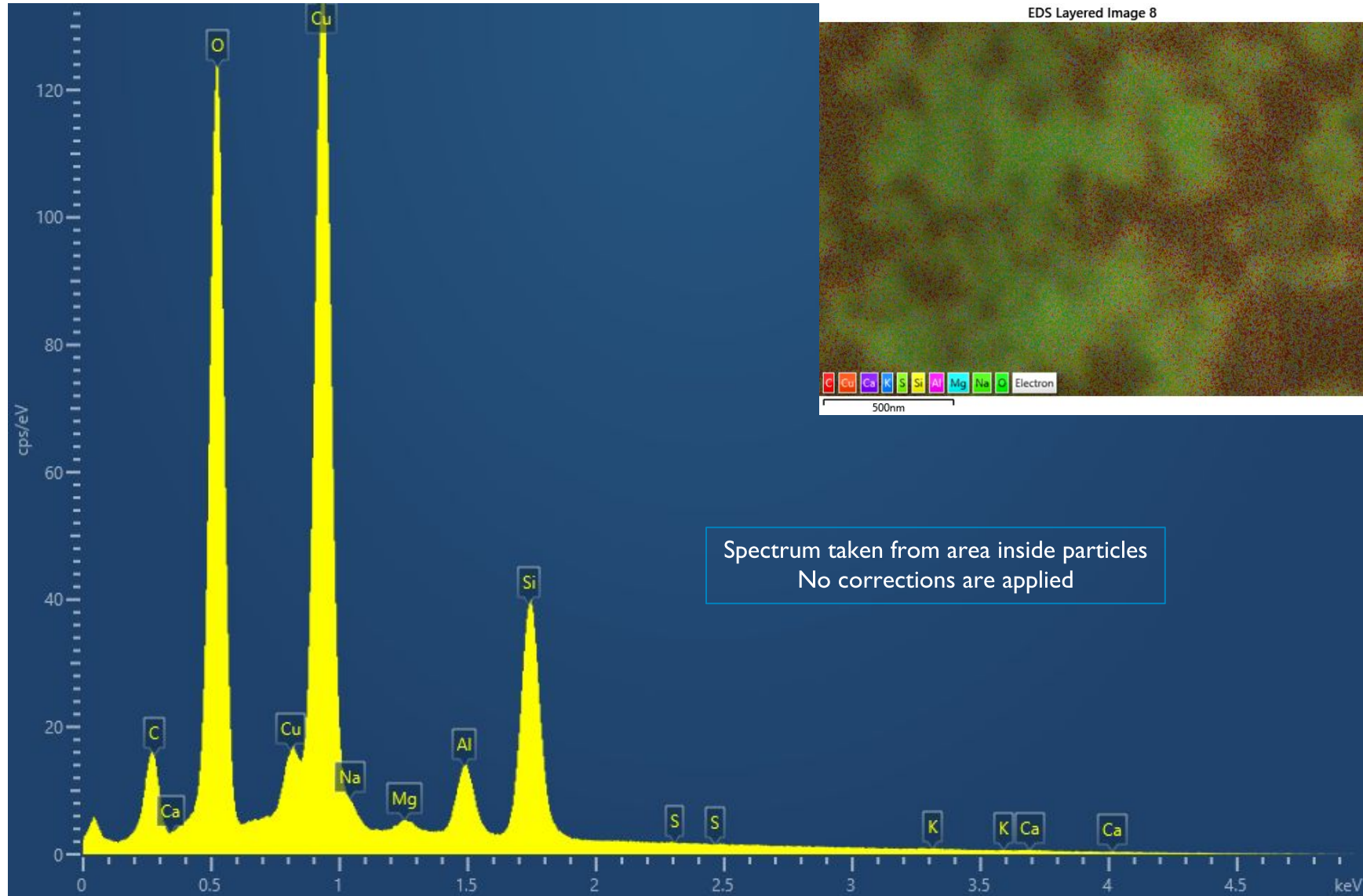


500nm

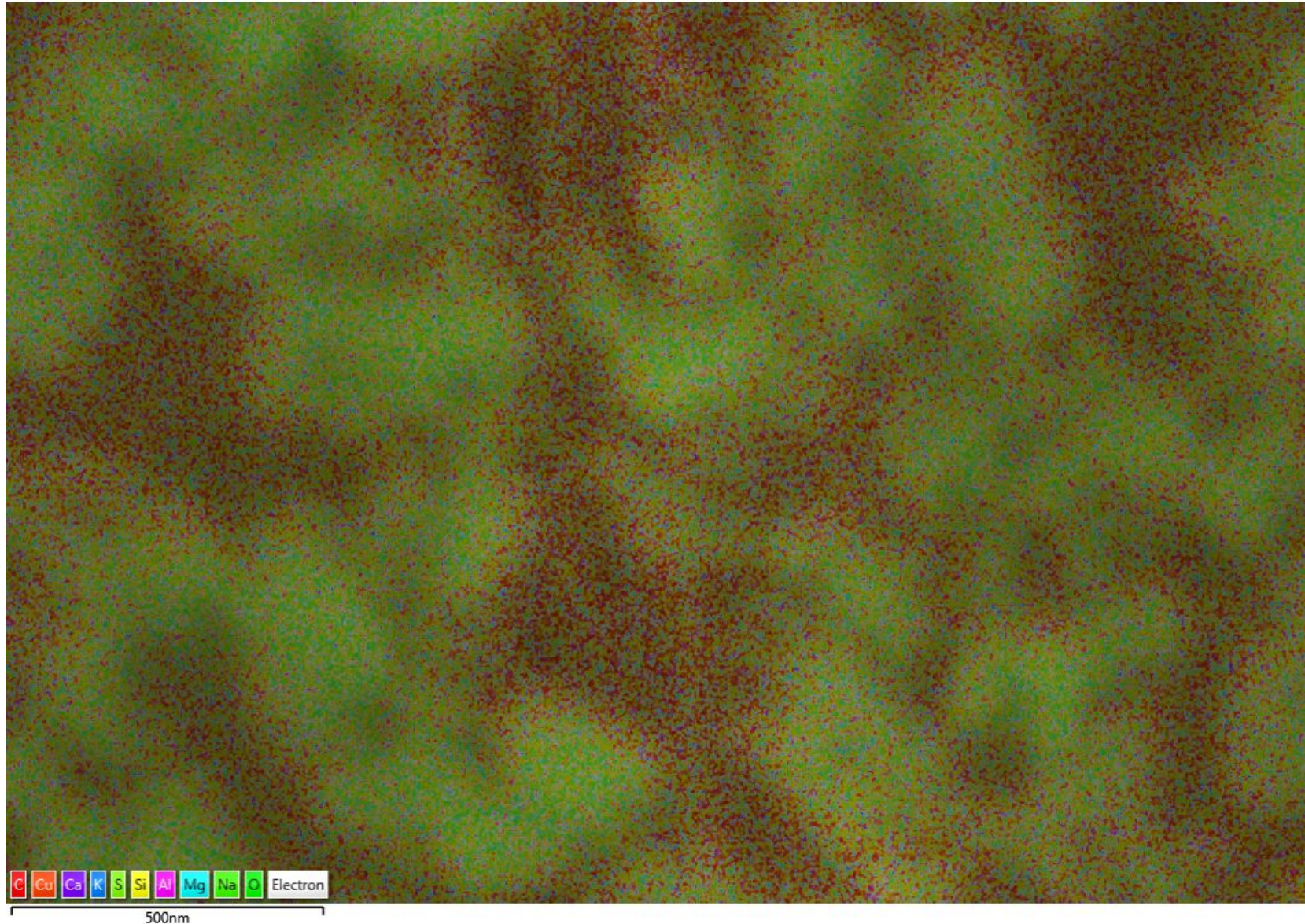
Cu L series



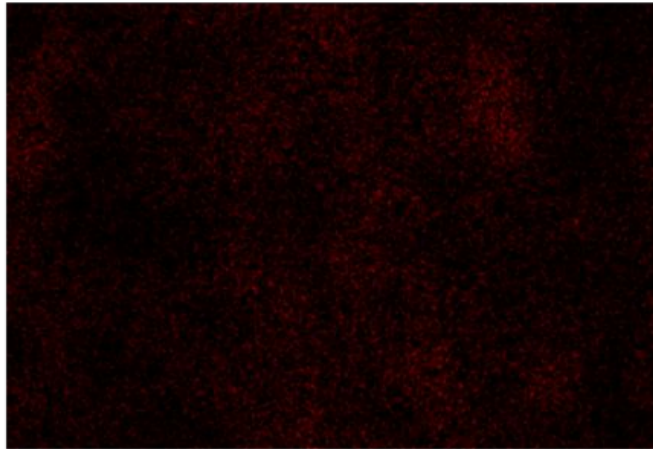
500nm



EDS Layered Image 9

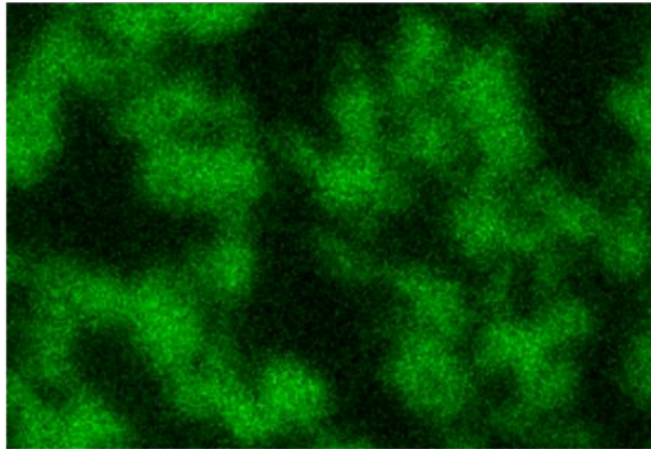


C K series



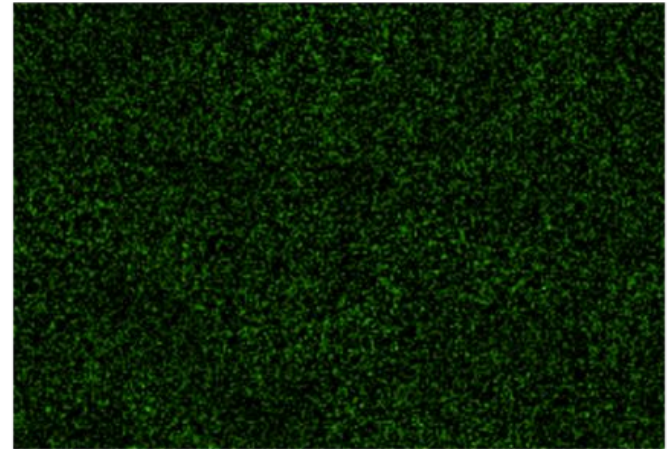
500nm

O K series



500nm

Na K series



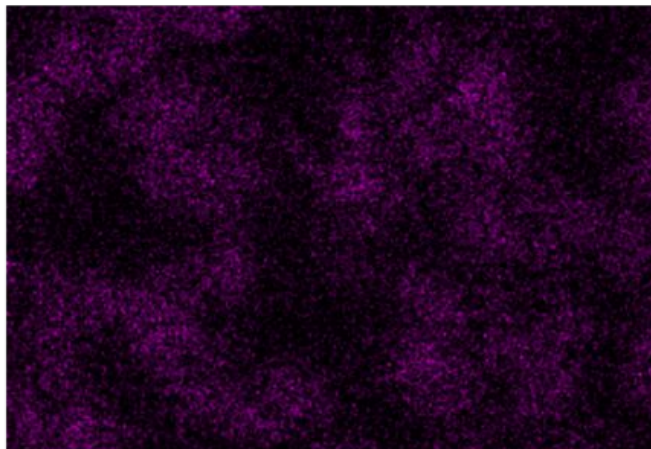
500nm

Mg K series



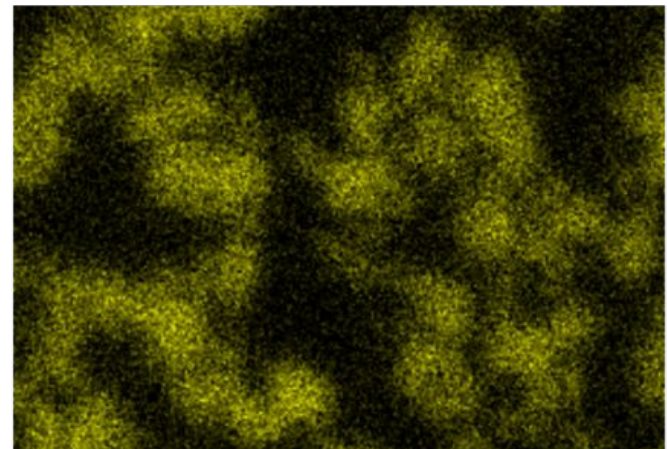
500nm

Al K series



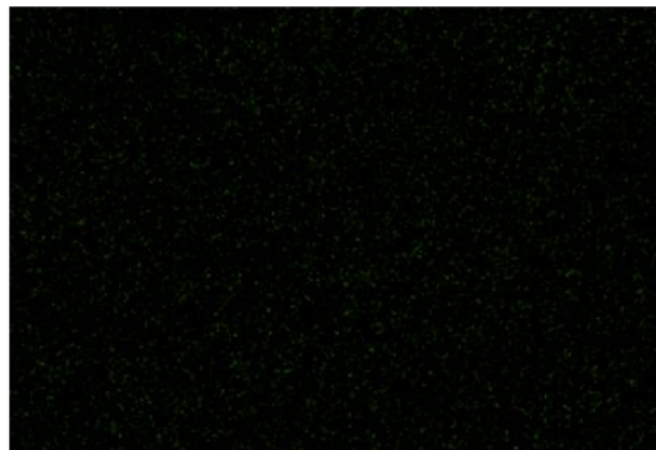
500nm

Si K series



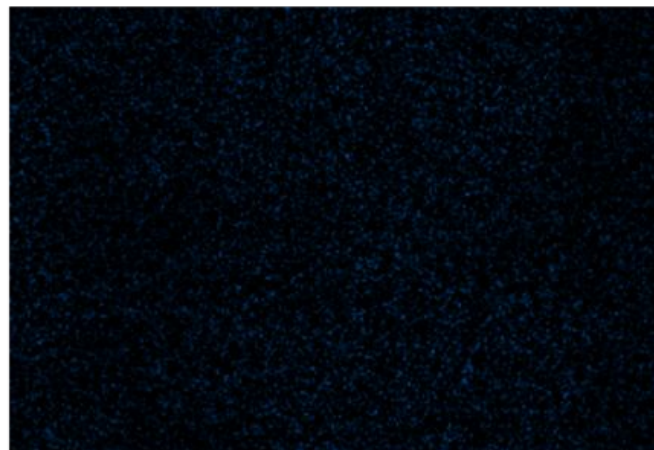
500nm

S K series



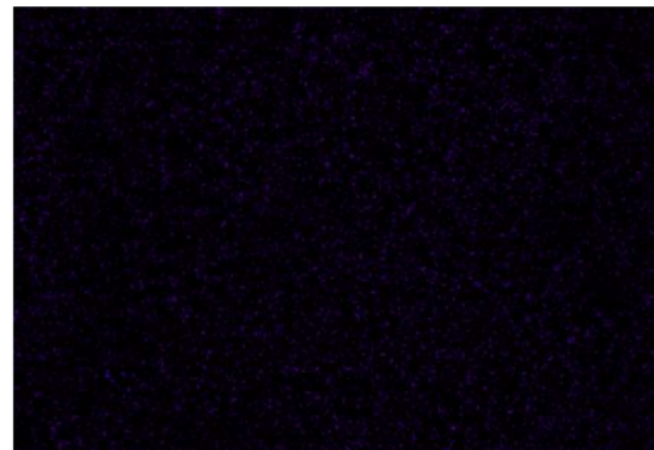
500nm

K L series



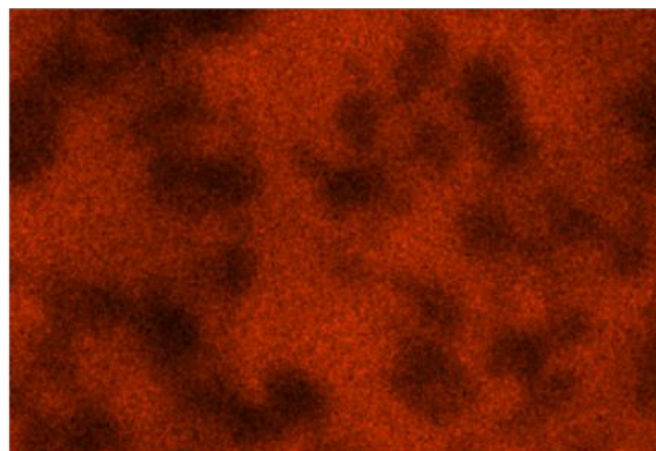
500nm

Ca L series

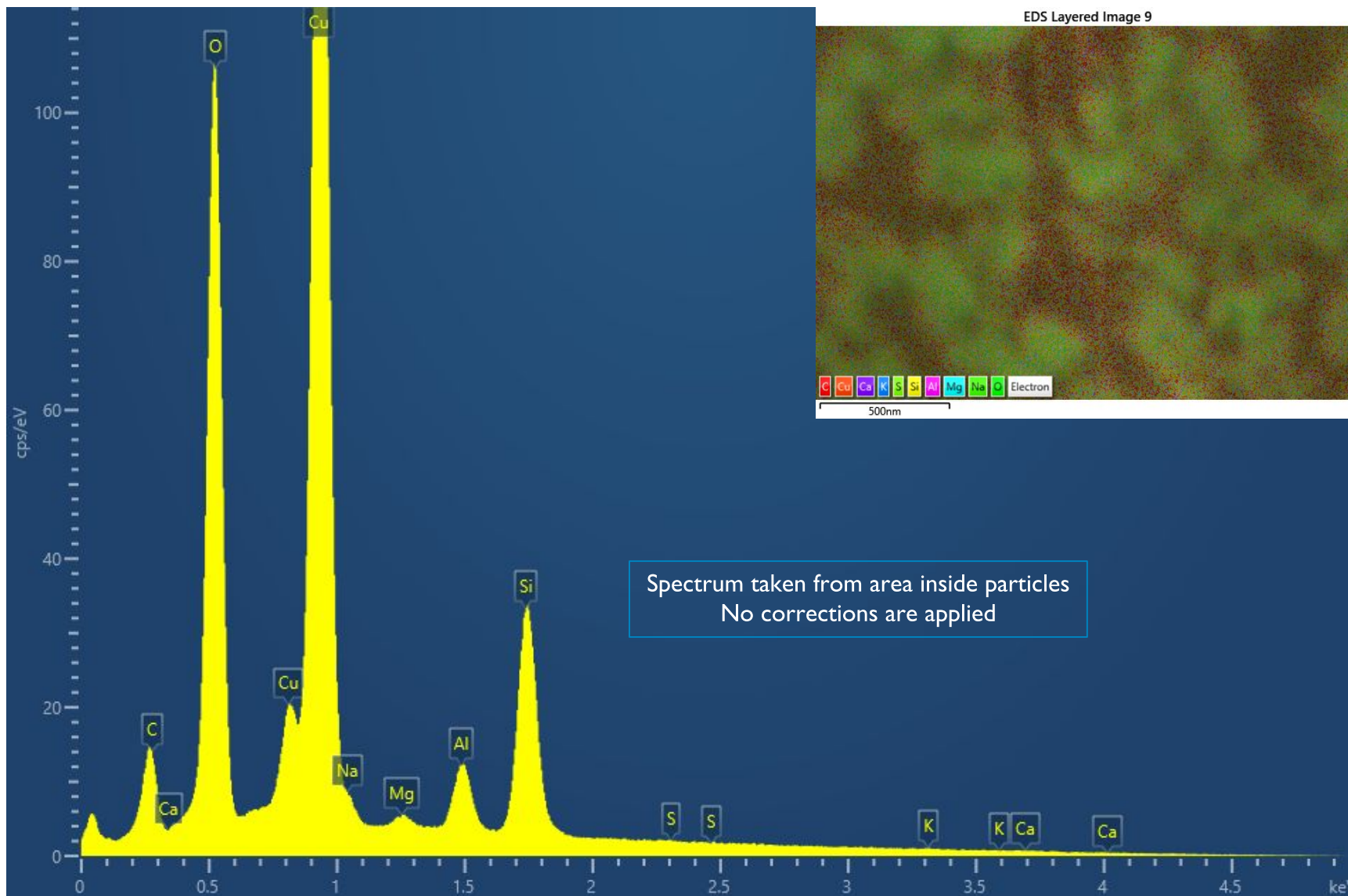


500nm

Cu L series



500nm





**COVALENT  
METROLOGY**

[covalentmetrology.com](https://covalentmetrology.com)